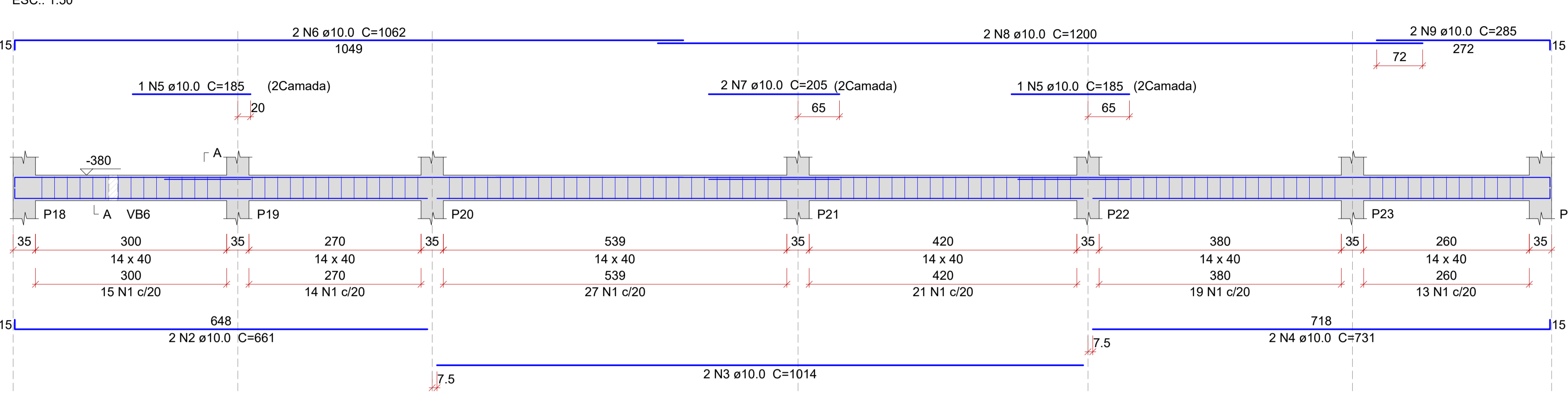
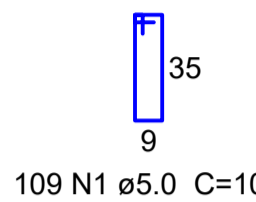
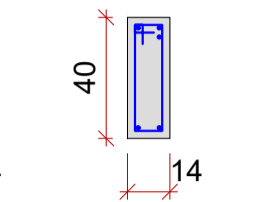


### VB4 (14 x 40)



SEÇÃO A-A  
ESC.: 1:25



### Relação do aço

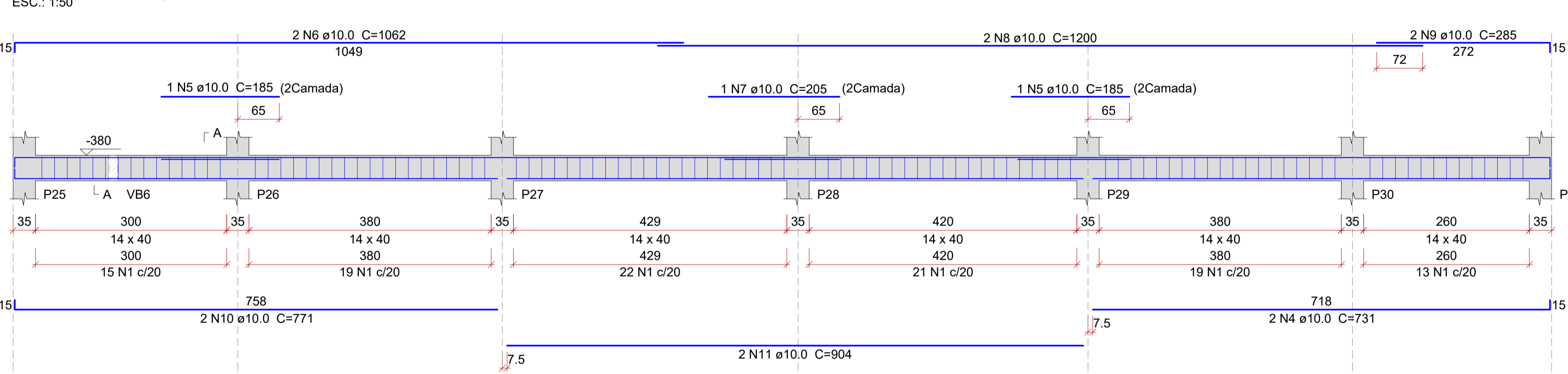
AÇO	N	DIAM (mm)	QUANT	C.UNIT (cm)	C.TOTAL (cm)
CA60	1	5.0	337	100	33700
CA50	2	10.0	2	661	1322
	3	10.0	2	1014	2028
	4	10.0	4	731	2924
	5	10.0	5	185	925
	6	10.0	4	1062	4248
	7	10.0	3	205	615
	8	10.0	4	1200	4800
	9	10.0	4	285	1140
	10	10.0	2	771	1542
	11	10.0	2	904	1808
	12	10.0	2	249	498
	13	10.0	2	259	518
	14	10.0	2	1000	2000
	15	10.0	2	365	730
	16	10.0	2	1157	2314
	17	10.0	2	226	452
	18	10.0	2	1010	2020
	19	10.0	2	1050	2100

### Resumo do aço

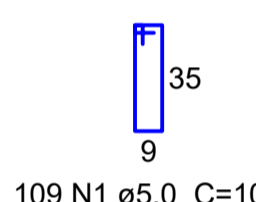
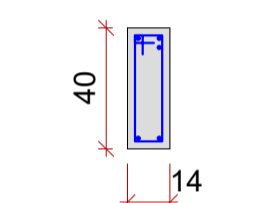
AÇO	DIAM (mm)	C.TOTAL (m)	QUANT (Barras)	PESO (kg)
CA50	10.0	319.9	27	197.2
CA60	5.0	337	29	51.9
PESO TOTAL (kg)				
CA50				197.2
CA60				51.9

Volume de concreto (C-25) = 3.71 m³  
Área de forma = 62.2 m²

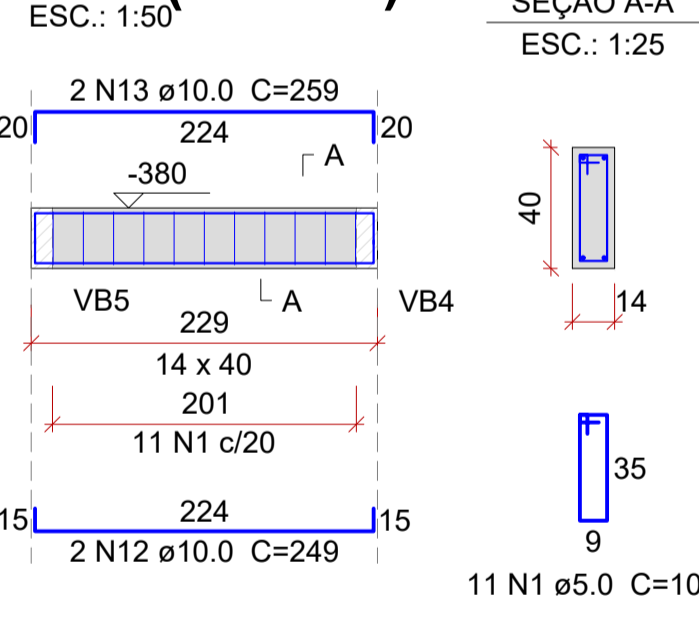
### VB5 (14 x 40)



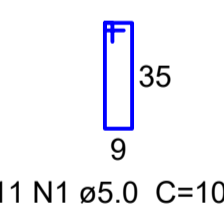
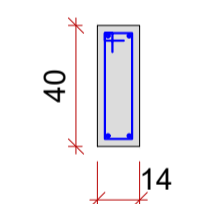
SEÇÃO A-A  
ESC.: 1:25



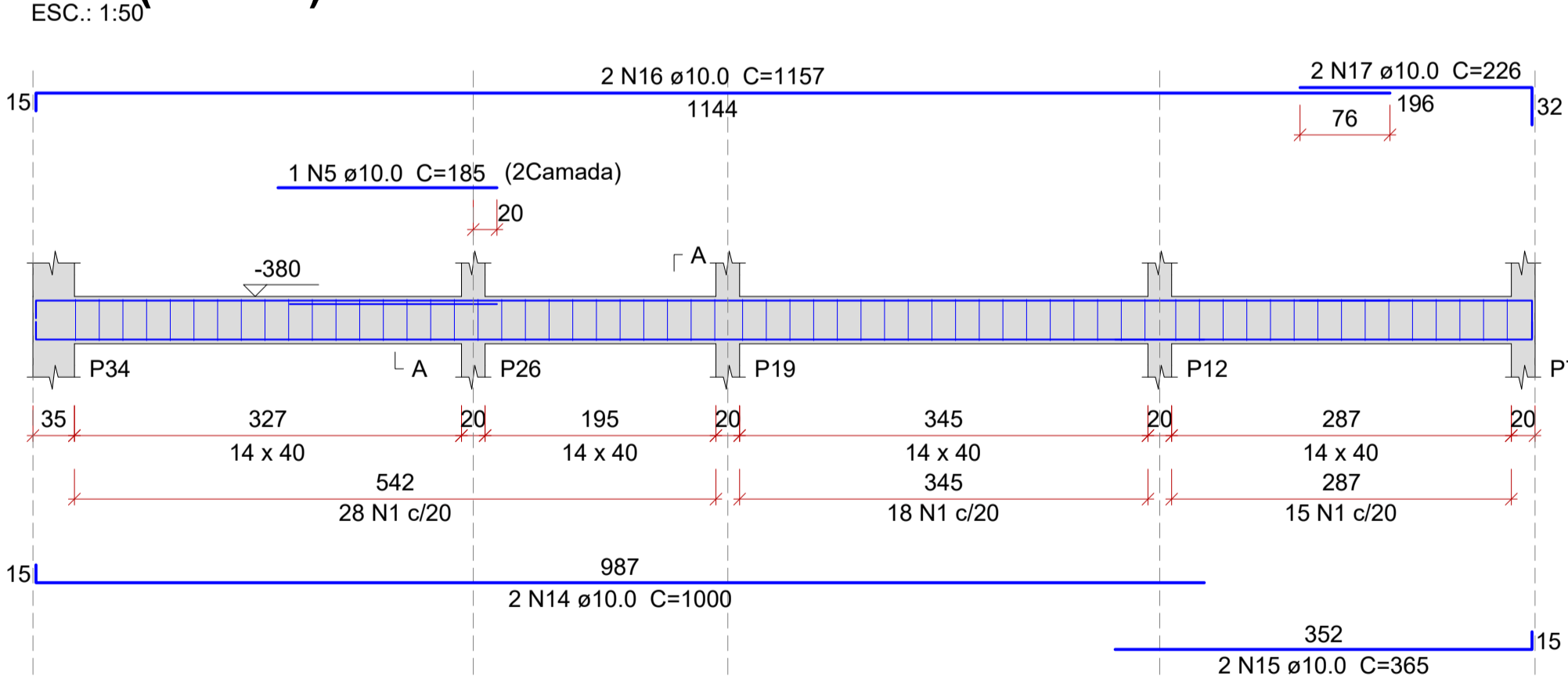
### VB6 (14 x 40)



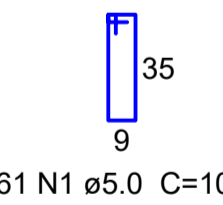
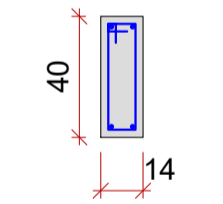
SEÇÃO A-A  
ESC.: 1:25



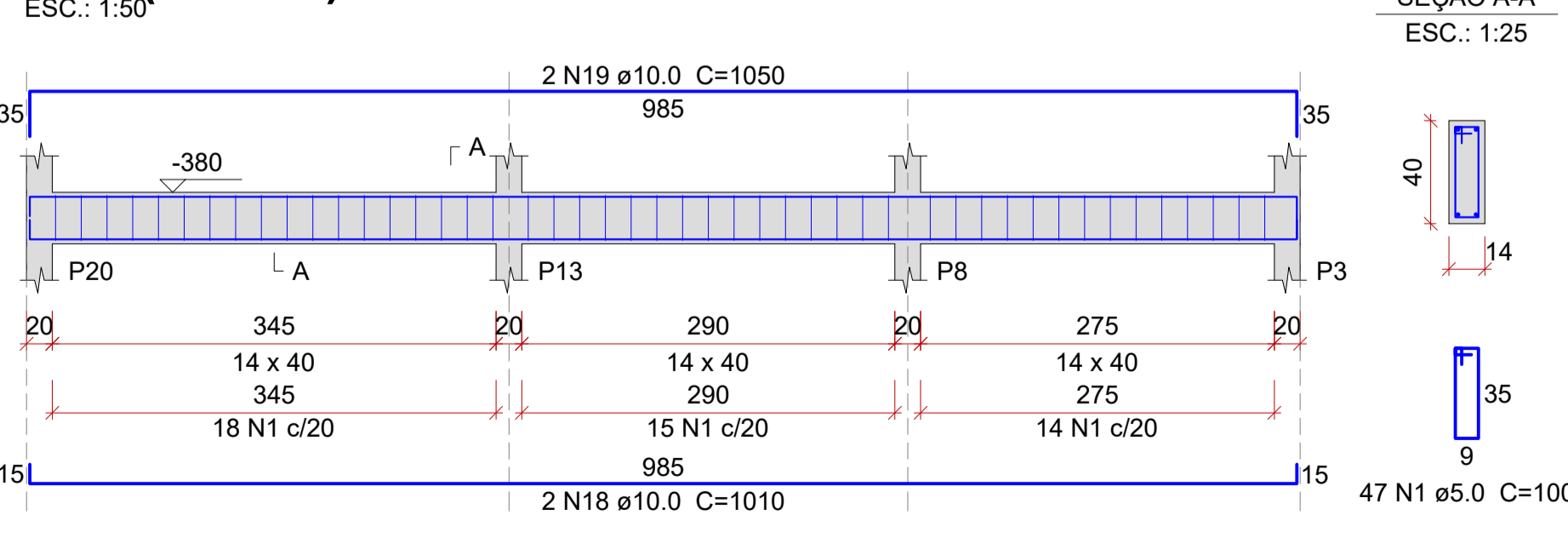
### VB7 (14 x 40)



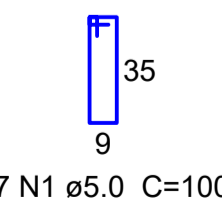
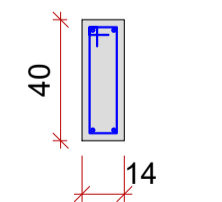
SEÇÃO A-A  
ESC.: 1:25



### VB8 (14 x 40)



SEÇÃO A-A  
ESC.: 1:25



## VIGAS DO PAVIMENTO BALDRAME - FOLHA 02 DE 03

ESCALA INDICADA

REVISÃO: R00	DATA: 03/2022	DESCRIÇÃO: EMIÇÃO INICIAL
		
PROPRIETÁRIO / CONTRATANTE: <b>PREFEITURA MUNICIPAL DE WITMARSUM</b> CNPJ: 83.102.442/0001-76		ASSINATURA:
RESPONSÁVEL TÉCNICO PROJETO: EDUARDO FRANCISCO SILVA DE FIGUEIREDO ENGENHEIRO CIVIL - CREA: 187051-8-SC		ASSINATURA:
PROJETO: <b>ESTRUTURAL</b>		
OBRA: CONSTRUÇÃO DE UMA UNIDADE BÁSICA DE SAÚDE DE PORTE 1		
LOGRADOURO: RUA 25 DE JULHO MUNICÍPIO: WITMARSUM	BAIRRO: CENTRO UF: SC	Nº: S/N CEP: 89157-000
ÁREA TOTAL EDIFICAÇÃO: 346,45m²		
CONTEÚDO: VIGAS DO PAVIMENTO BALDRAME 2/3		ESCALA: INDICADA DATA: SETEMBRO/2022 CÓDIGO AMAVI: 2744 DESENHISTA: EDUARDO FIGUEIREDO
<b>EST15/24</b>		

TODOS OS DIREITOS RESERVADOS. PROIBIDA A REPRODUÇÃO PARCIAL OU TOTAL. DESENHO VÁLIDO SOMENTE ASSINADO PELO RESPONSÁVEL DO PROJETO.