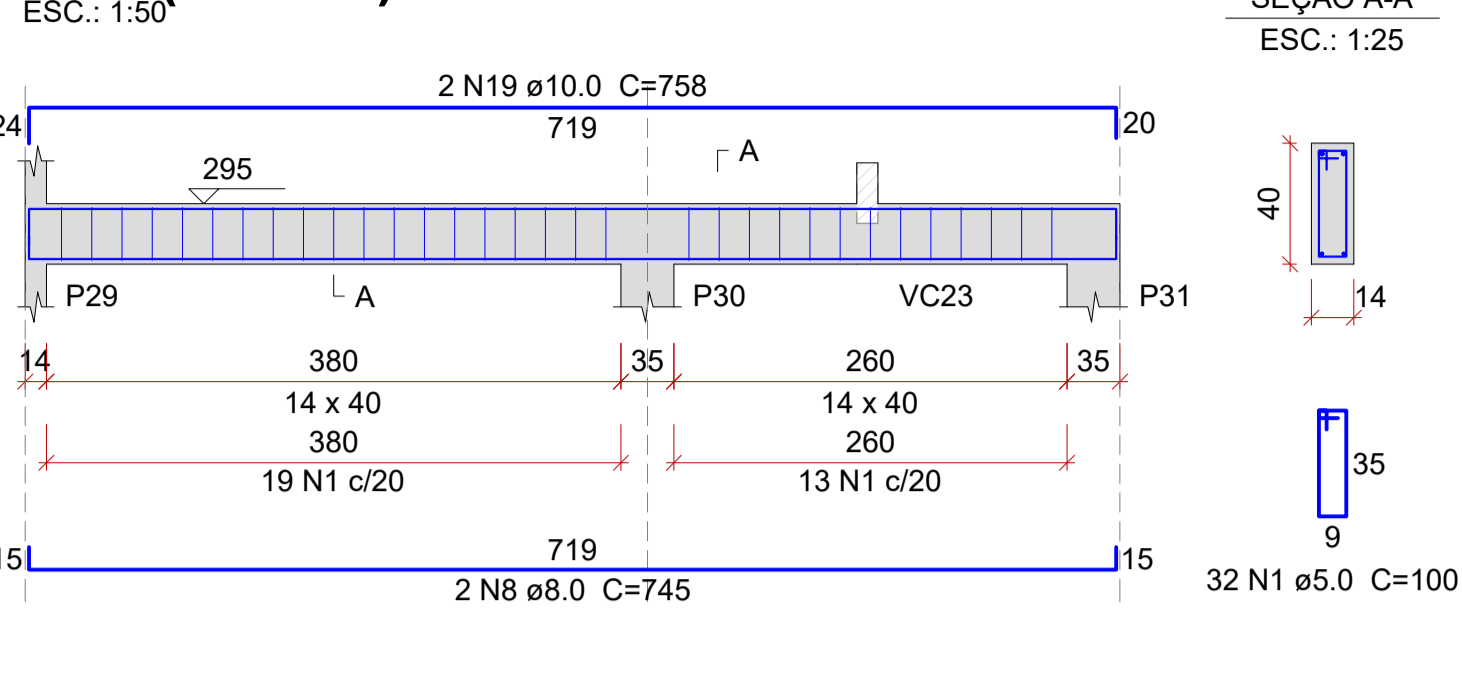
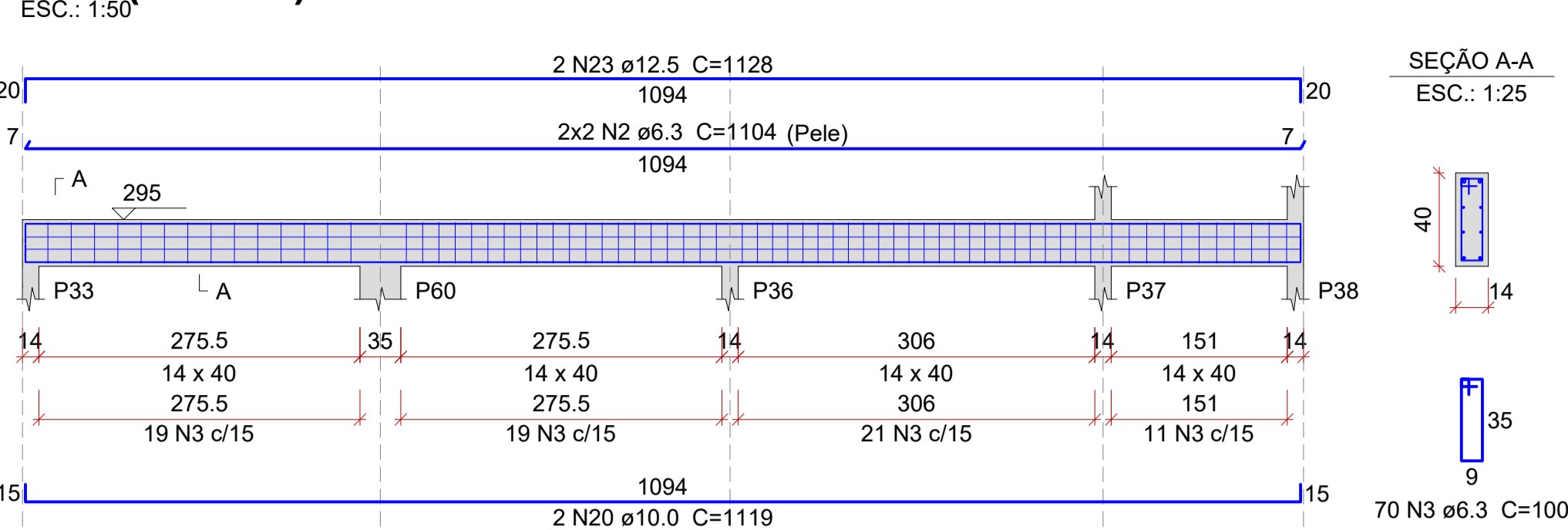


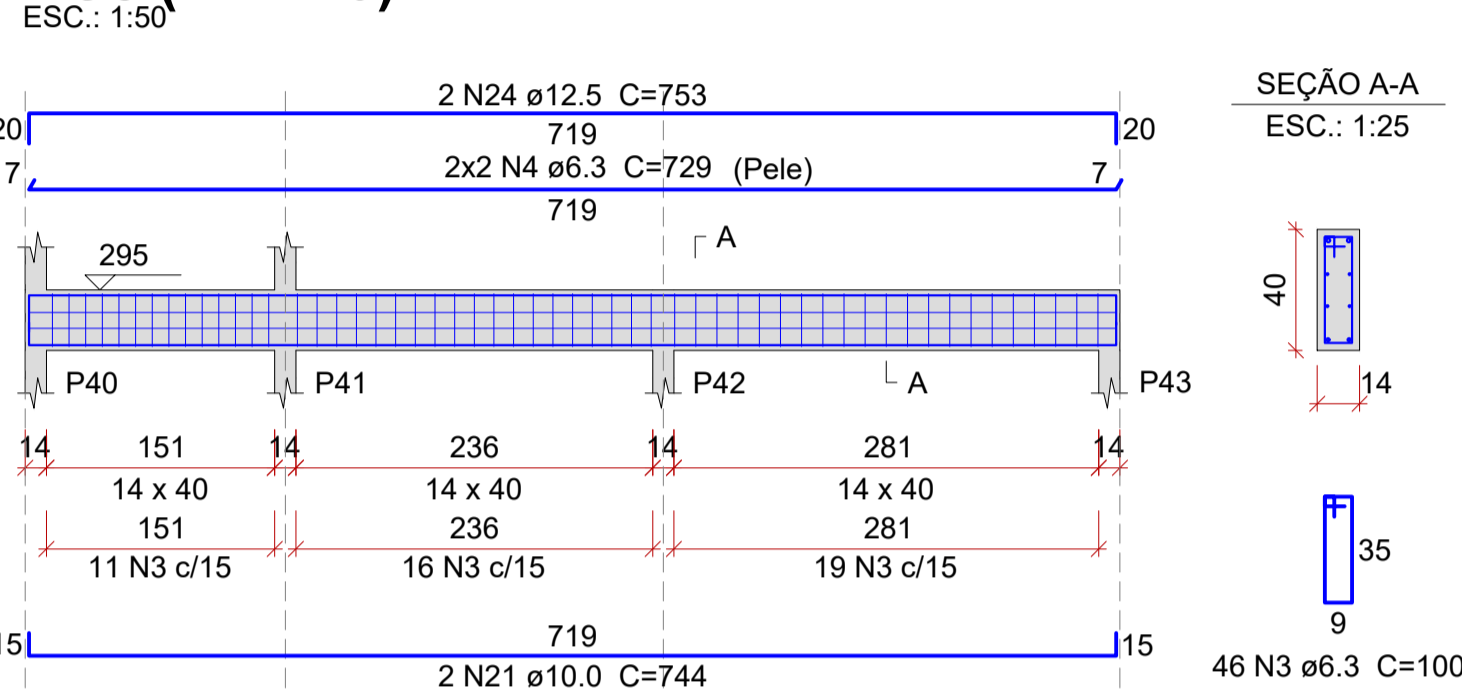
VC6 (14 x 40)



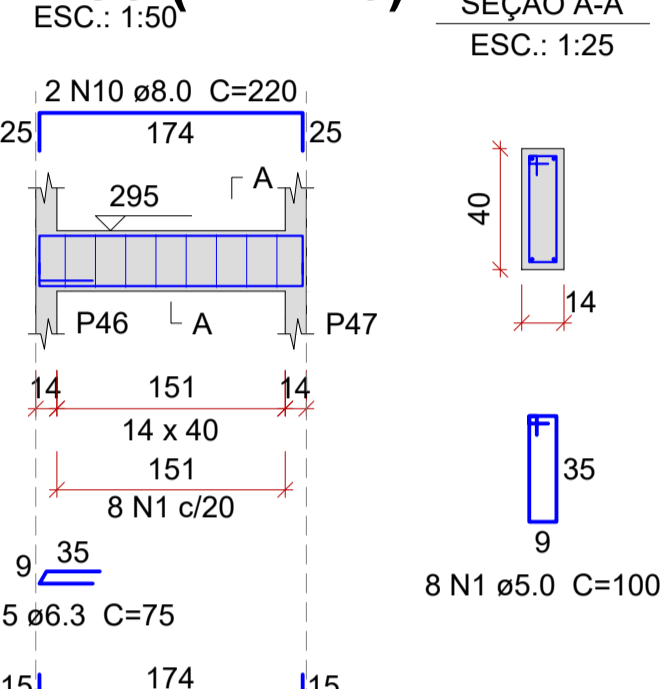
VC7 (14 x 40)



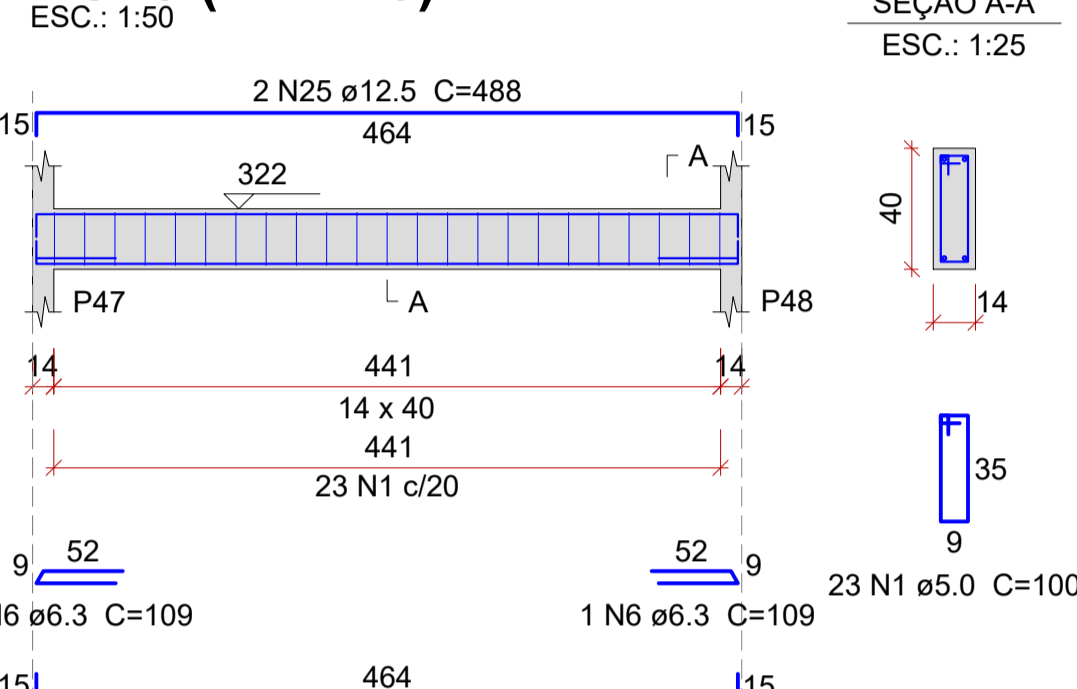
VC8 (14 x 40)



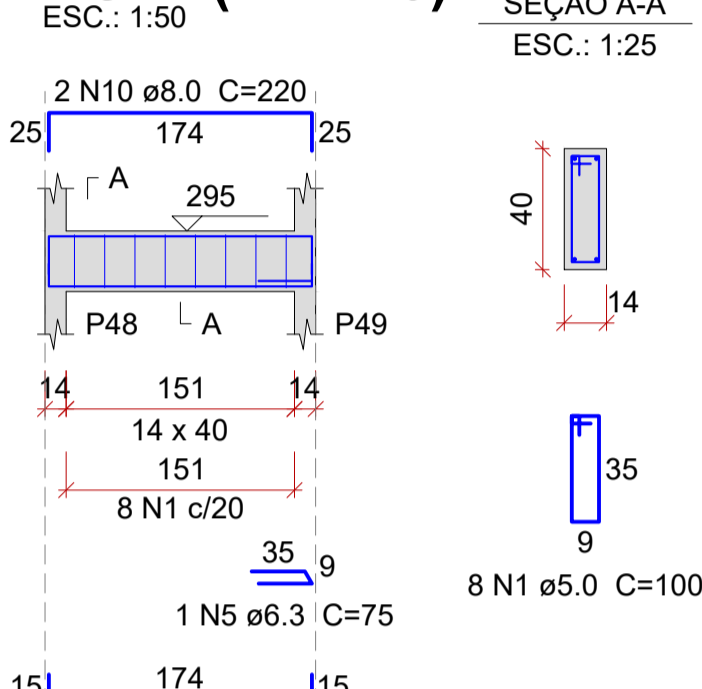
VC9 (14 x 40)



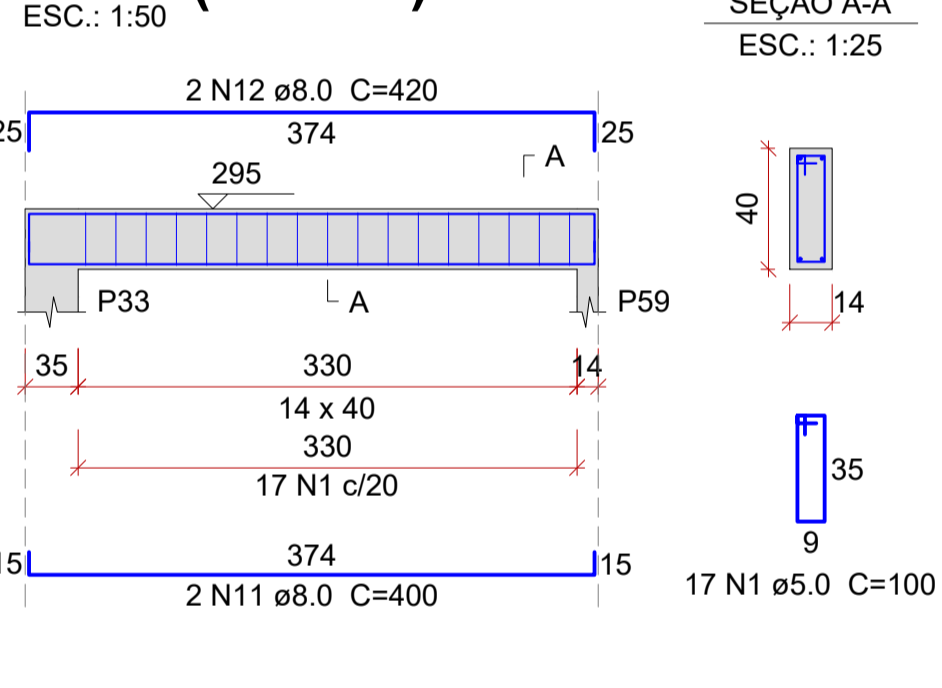
VC10 (14 x 40)



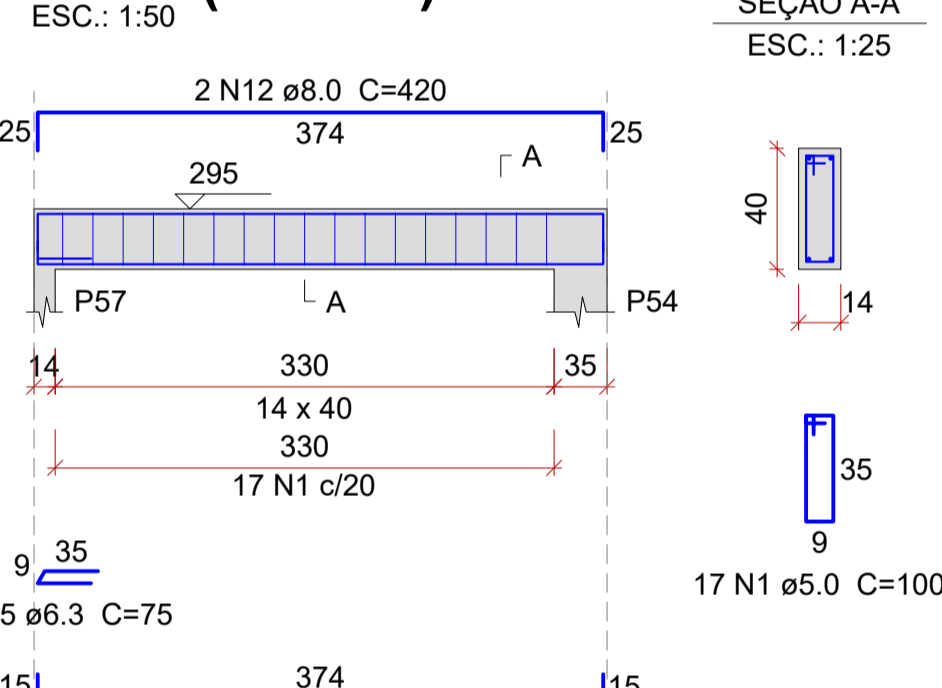
VC11 (14 x 40)



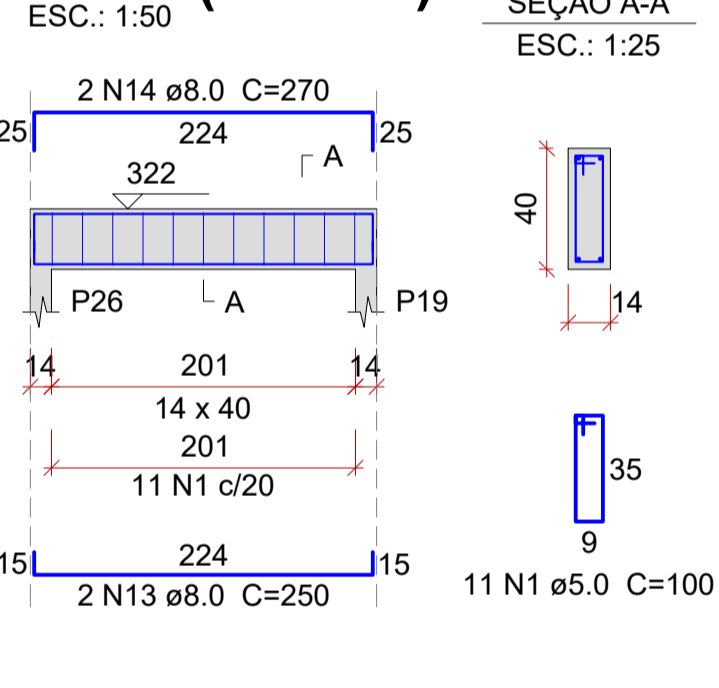
VC12 (14 x 40)



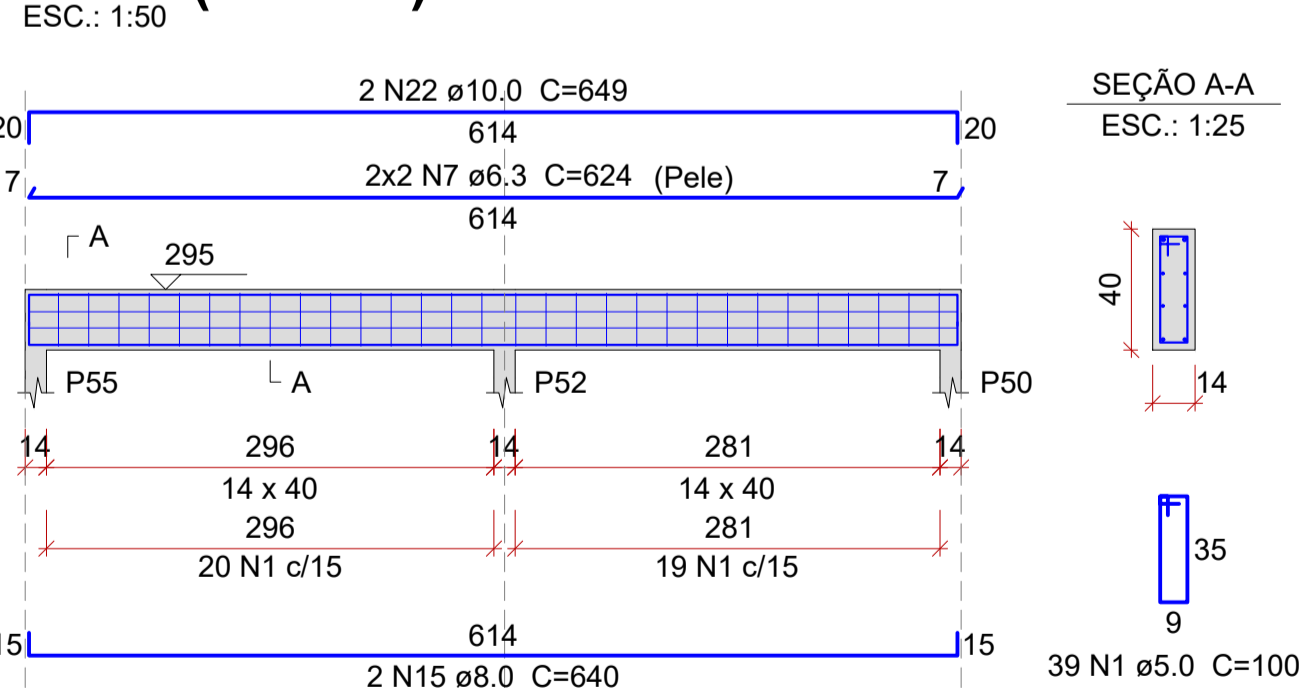
VC13 (14 x 40)



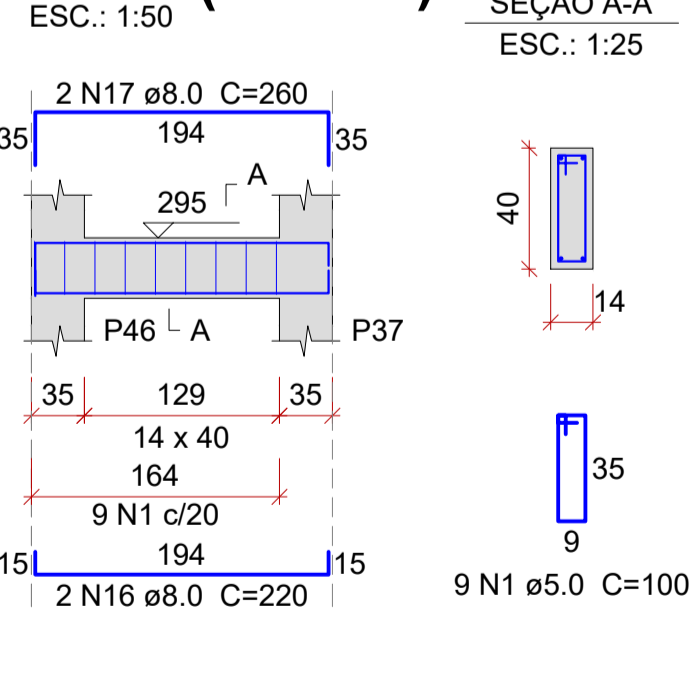
VC14 (14 x 40)



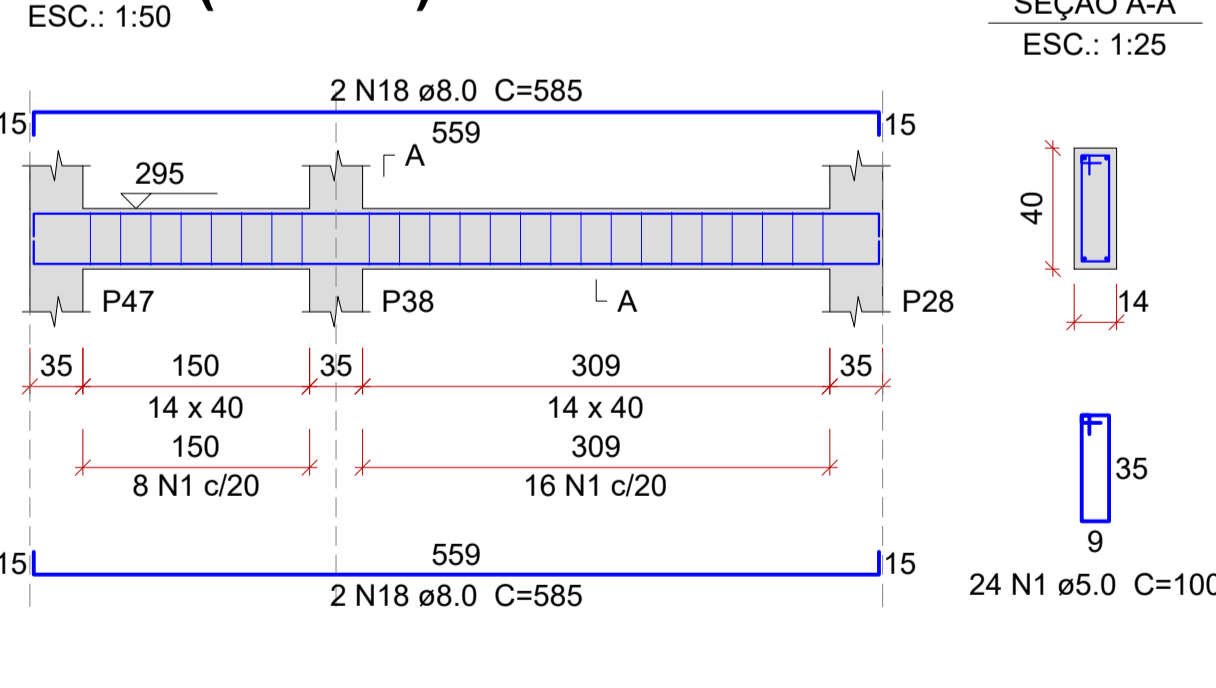
VC15 (14 x 40)



VC16 (14 x 40)



VC17 (14 x 40)



Relação do aço

AÇO	N	DIAM (mm)	QUANT	C.UNIT (cm)	C.TOTAL (cm)
VC6					18800
VC9					11600
VC12					2916
VC15					225
VC7					218
VC10					2496
VC13					1490
VC16					800
VC8					880
VC11					1600
VC14					1680
VC17					500
					540
					1280
					440
					520
					2340
					1516
					2238
					1488
					1298
					2256
					1506
					1952

Resumo do aço

AÇO	DIAM (mm)	C.TOTAL (m)	QUANT (Barras)	PESO (kg)
CA50	6.3	218.8	19	53.5
	8.0	120.7	11	47.6
	10.0	65.4	6	40.3
	12.5	57.2	5	55
CA60	5.0	188	16	29
PESO TOTAL (kg)				
CA50			196.5	
CA60			29	

Volume de concreto (C-25) = 2.85 m³
Área de forma = 53.98 m²

REVISÃO:	DATA:	DESCRIÇÃO:
R00	03/2022	EMIÇÃO INICIAL

PROPRIETÁRIO / CONTRATANTE: **PREFEITURA MUNICIPAL DE WITMARSUM**
CNPJ: 83.102.442/0001-76

RESPONSÁVEL TÉCNICO PROJETO: **EDUARDO FRANCISCO SILVA DE FIGUEIREDO**
ENGENHEIRO CIVIL - CREA: 187051-8-SC

PROJETO: **ESTRUTURAL**

OBRA: **CONSTRUÇÃO DE UMA UNIDADE BÁSICA DE SAÚDE DE PORTE 1**

LOGRADOURO: RUA 25 DE JULHO BAIRRO: CENTRO Nº: S/N
MUNICÍPIO: WITMARSUM UF: SC CEP: 89157-000

ÁREA TOTAL EDIFICAÇÃO: 346,45m²

CONTEÚDO: VIGAS DO PAVIMENTO COBERTURA 2/3

ESCALA: INDICADA DATA: SETEMBRO/2022
CÓDIGO AMAVI: 2744
DESENHISTA: EDUARDO FIGUEIREDO

EST22/24

VIGAS DO PAVIMENTO COBERTURA - FOLHA 02 DE 03

ESCALA INDICADA

TODOS OS DIREITOS RESERVADOS. PROIBIDA A REPRODUÇÃO PARCIAL OU TOTAL. DESENHO VALUADO SOMENTE ASSINADO PELO RESPONSÁVEL DO PROJETO.