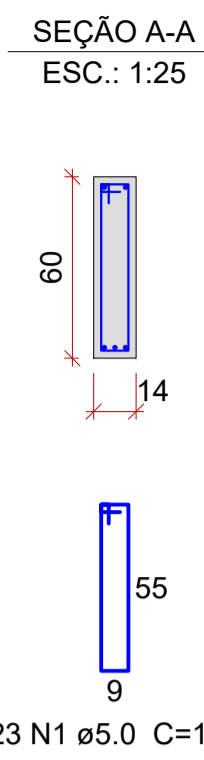
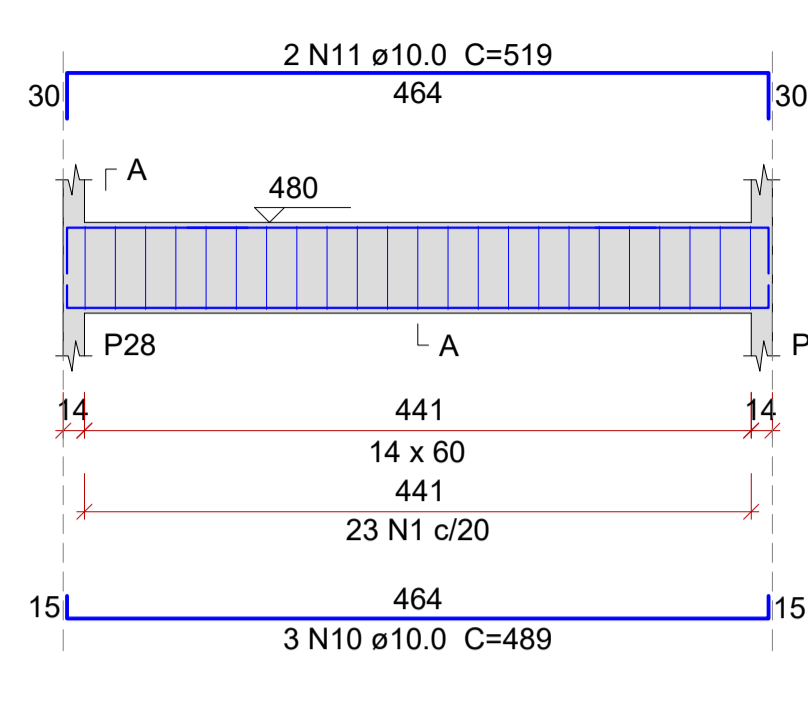
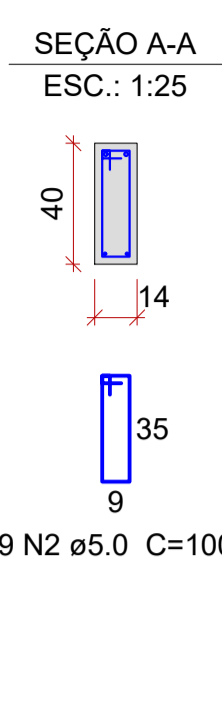
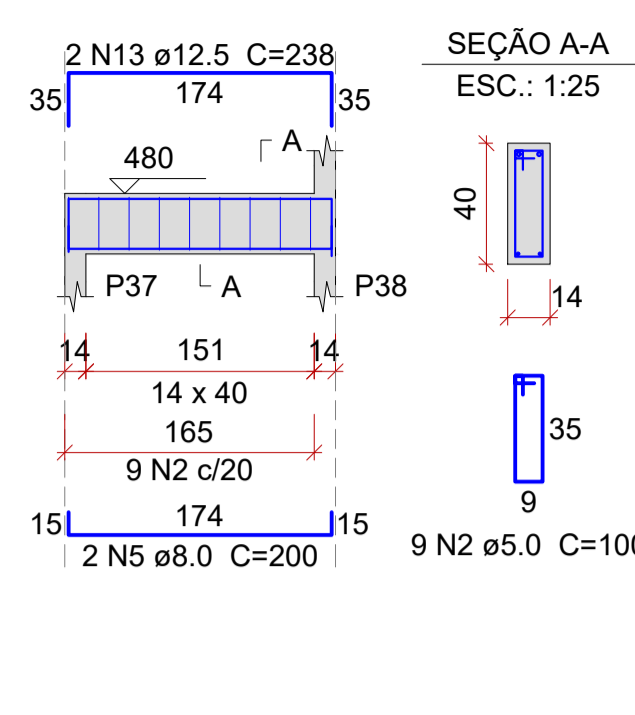


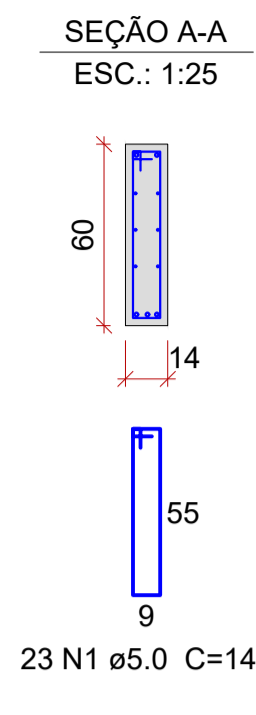
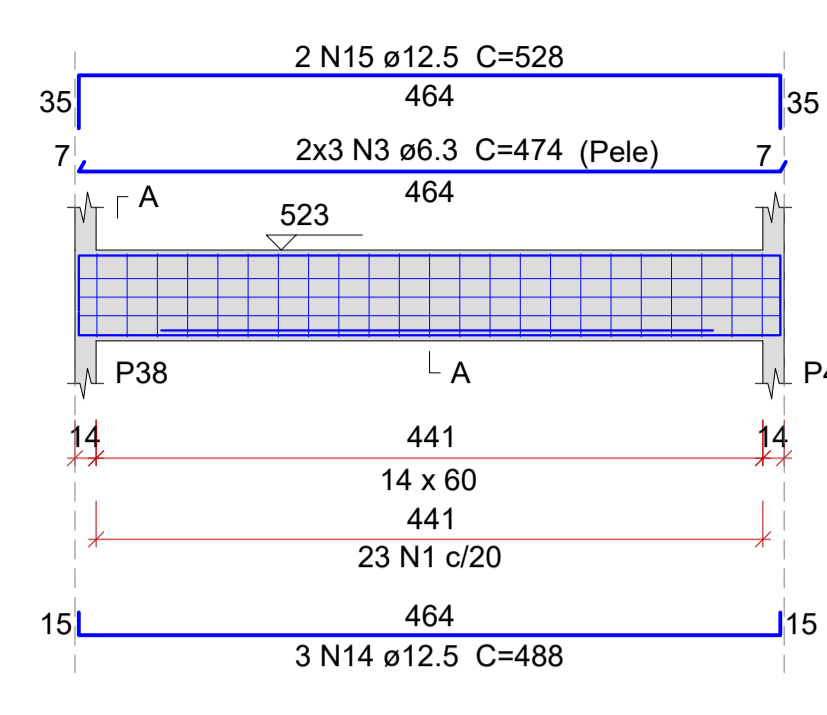
VR1 (14 x 60)
ESC.: 1:50



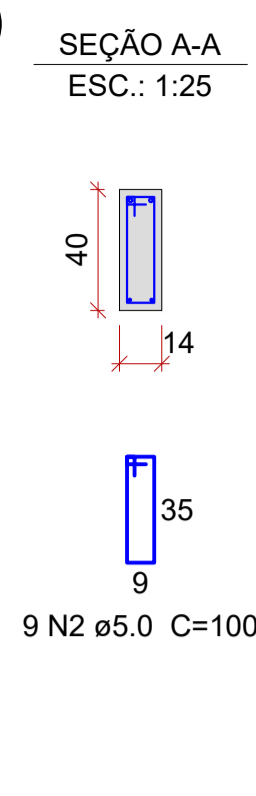
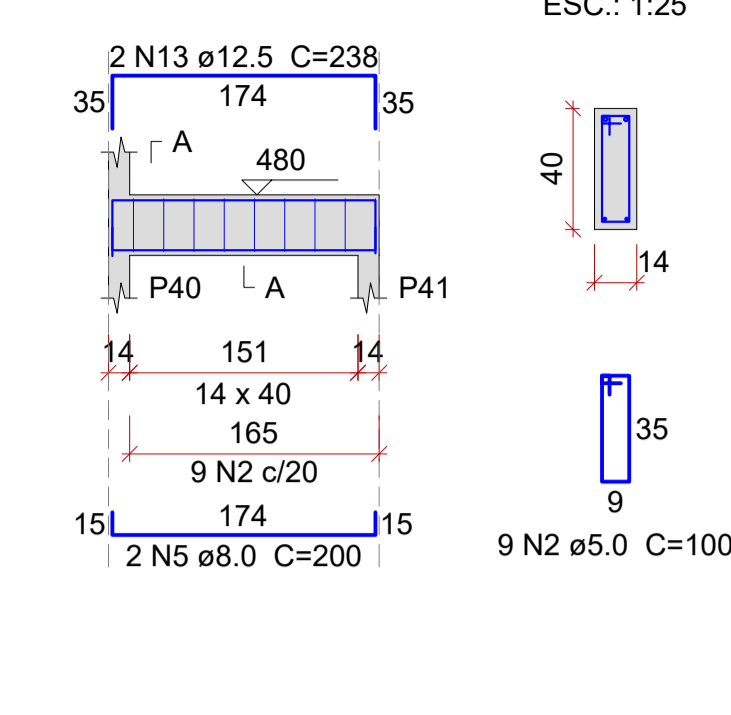
VR2 (14 x 40)
ESC.: 1:50



VR3 (14 x 60)
ESC.: 1:50



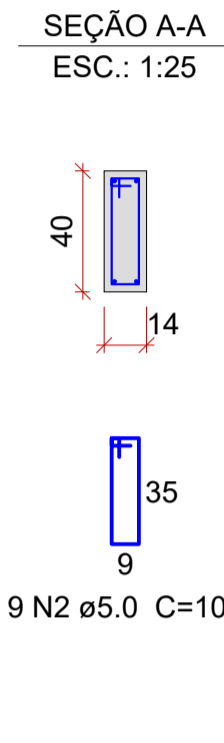
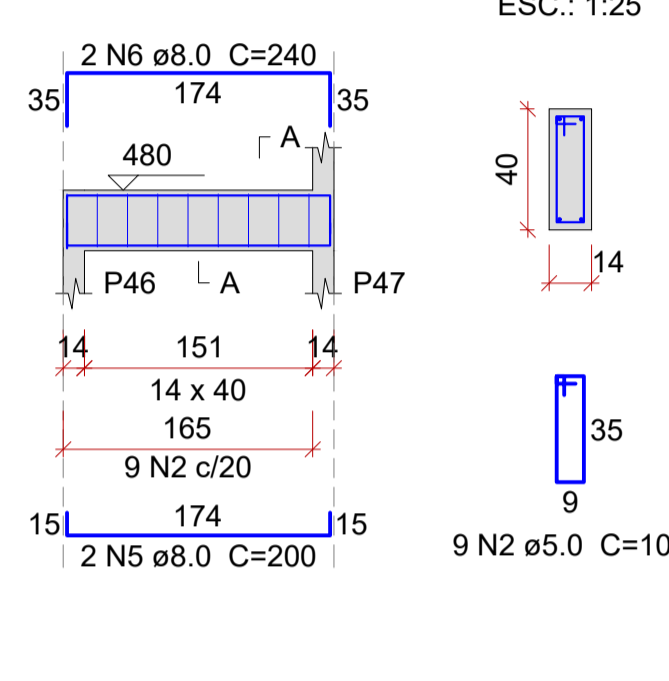
VR4 (14 x 40)
ESC.: 1:50



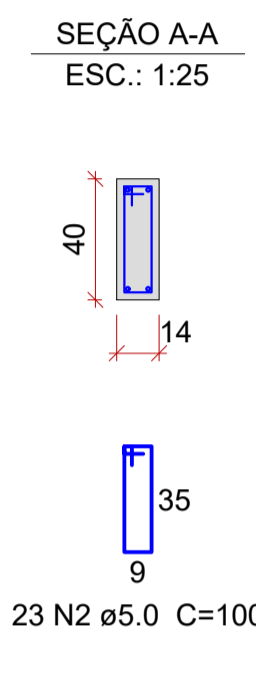
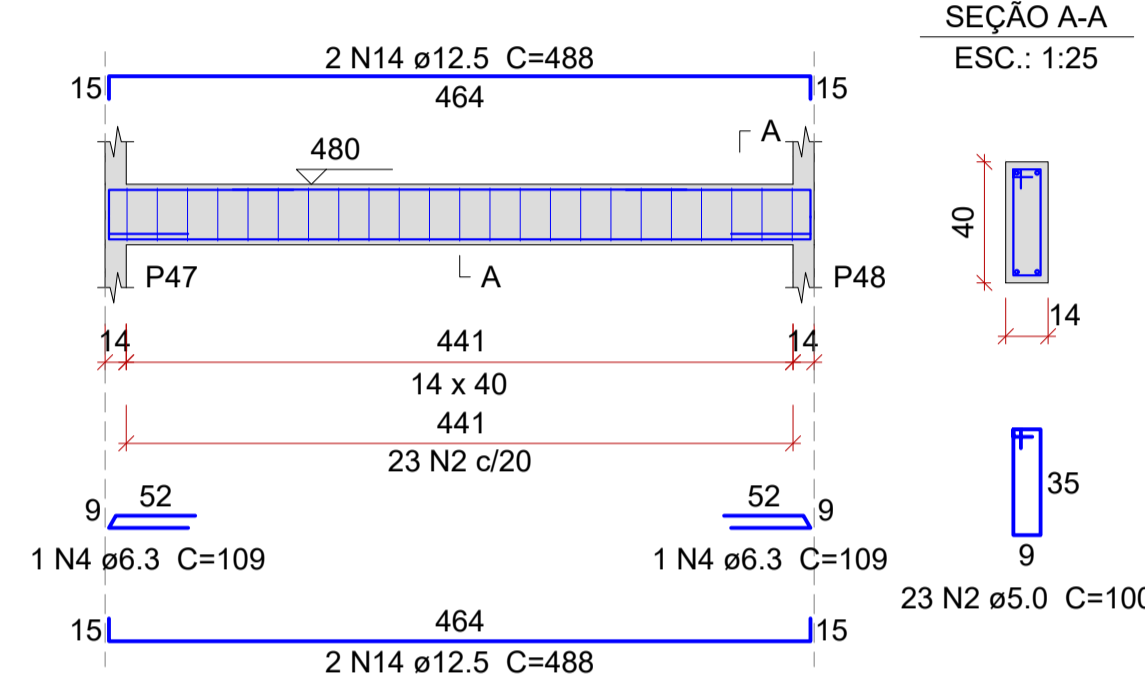
Relação do aço

AÇO	N	DIAM (mm)	QUANT	C.UNIT (cm)	C.TOTAL (cm)
VR1					
VR2					
VR3					
VR4					
VR5					
VR6					
VR7					
VR8					
VR9					
VR10					
VR11					

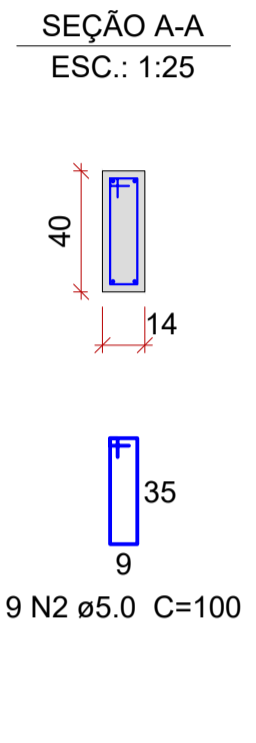
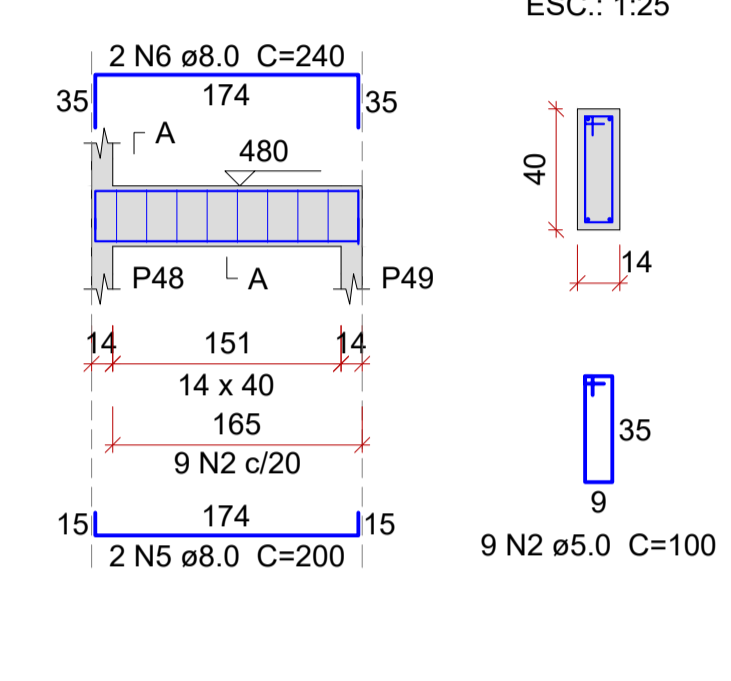
VR5 (14 x 40)
ESC.: 1:50



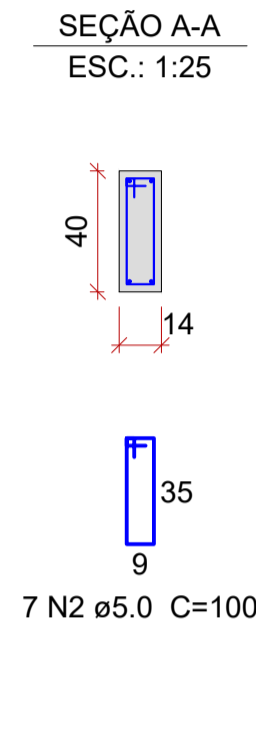
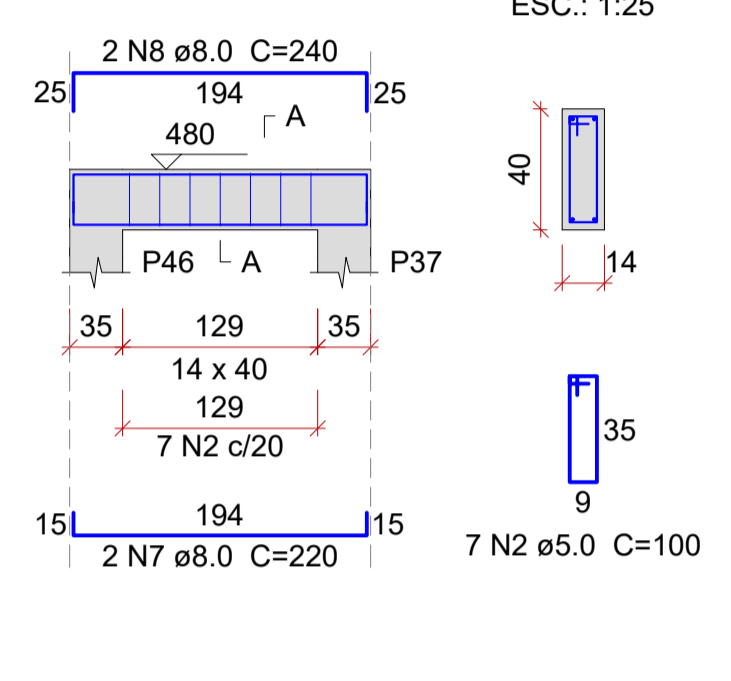
VR6 (14 x 40)
ESC.: 1:50



VR7 (14 x 40)
ESC.: 1:50



VR8 (14 x 40)
ESC.: 1:50

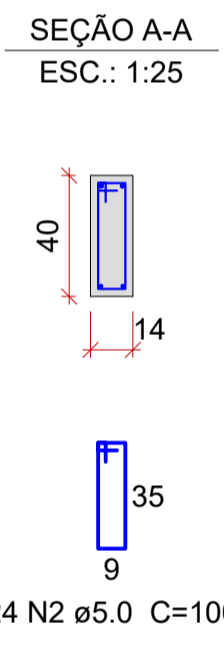
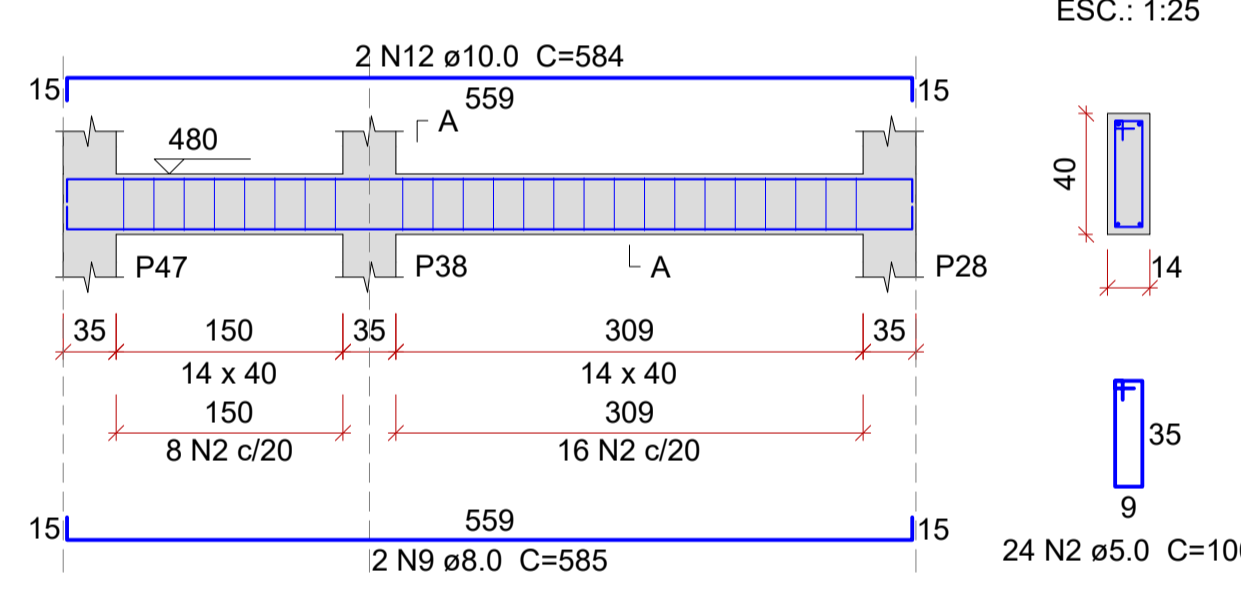


Resumo do aço

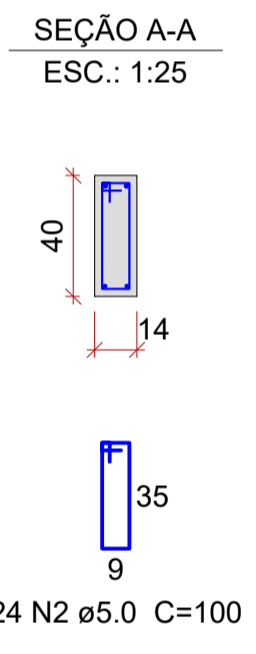
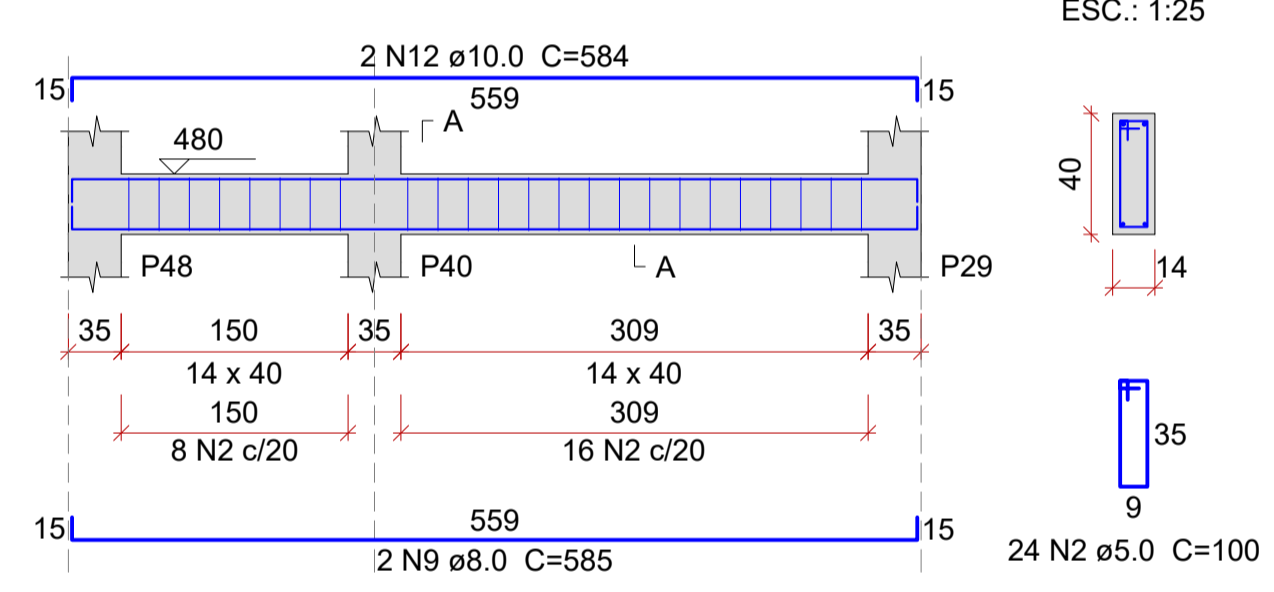
AÇO	DIAM (mm)	C.TOTAL (m)	QUANT (Barras)	PESO (kg)
CA50	6.3	30.7	3	7.5
	8.0	67.4	6	26.6
	10.0	48.5	5	29.8
	12.5	54.3	5	52.3
CA60	5.0	185.4	16	28.6
PESO TOTAL (kg)				
CA50		116.2		
CA60		28.6		

Volume de concreto (C-25) = 1.98 m³
Área de forma = 38.05 m²

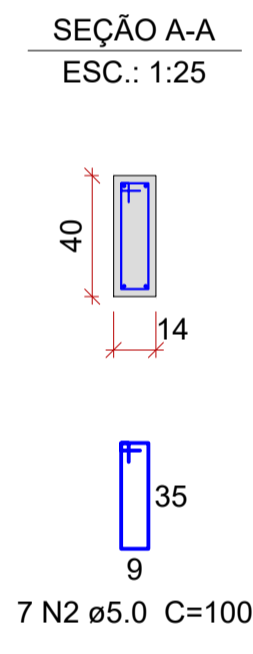
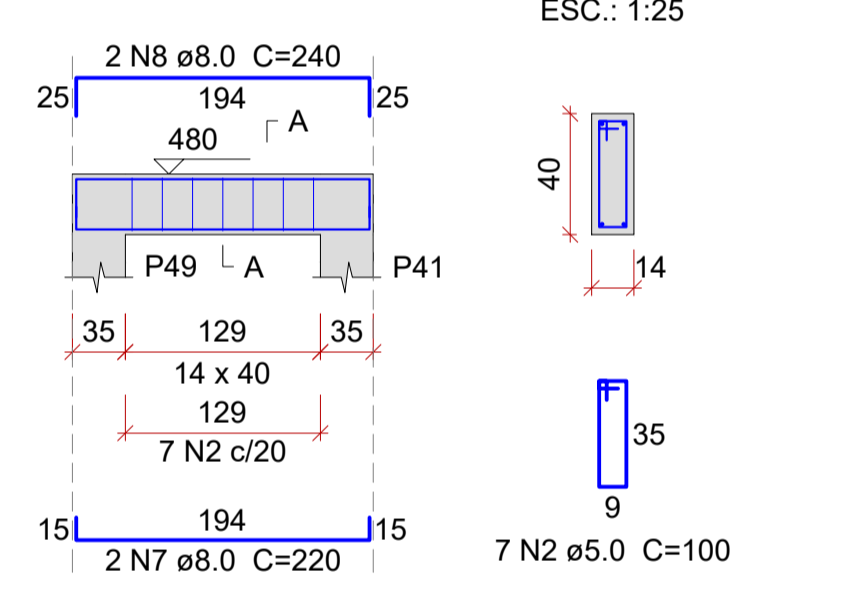
VR9 (14 x 40)
ESC.: 1:50



VR10 (14 x 40)
ESC.: 1:50



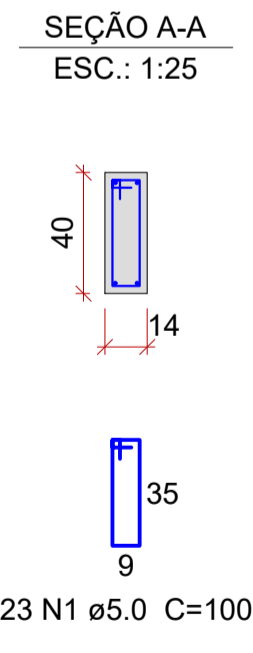
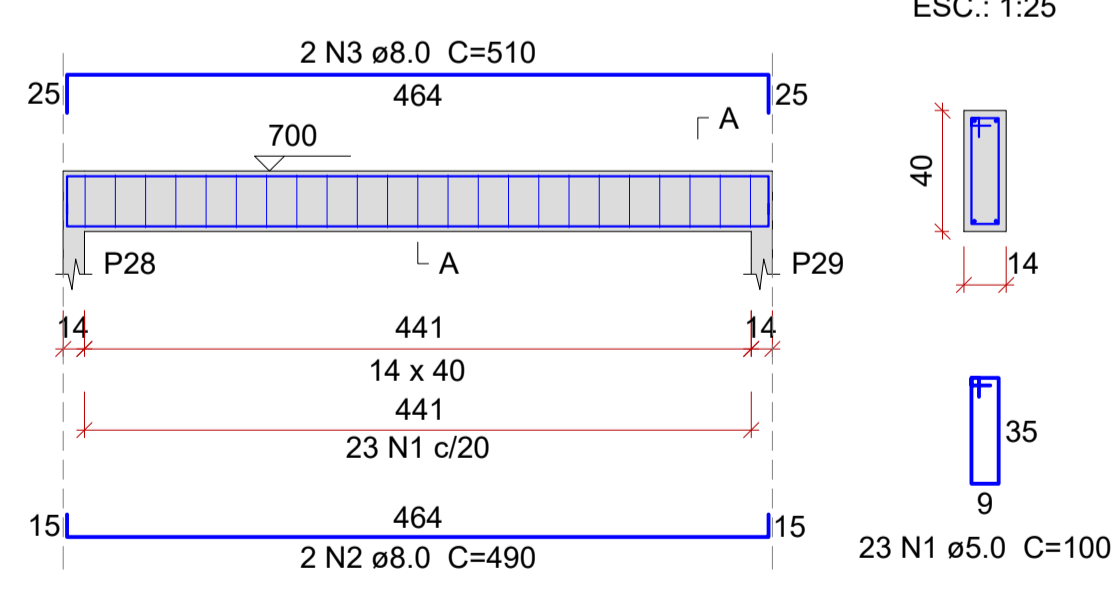
VR11 (14 x 40)
ESC.: 1:50



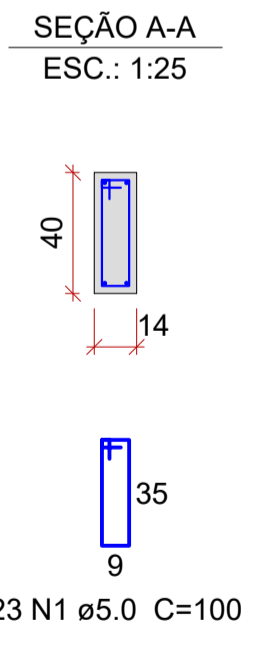
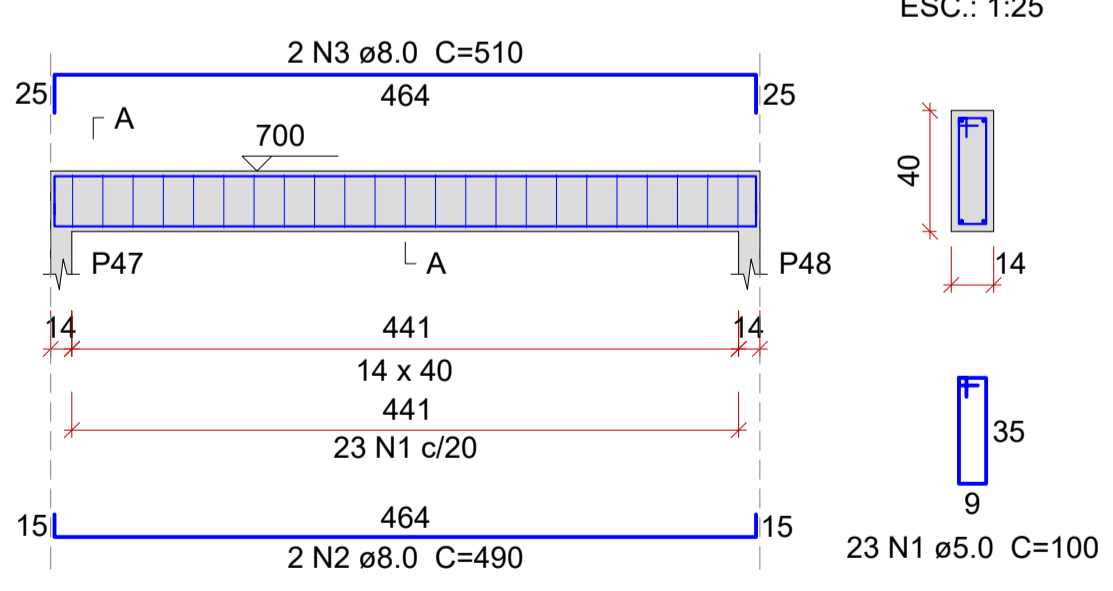
VIGAS DO PAVIMENTO RESERVATÓRIO

ESCALA INDICADA

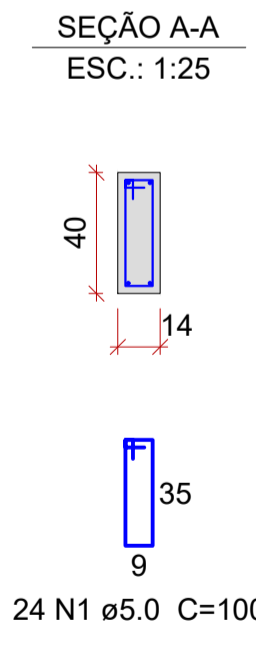
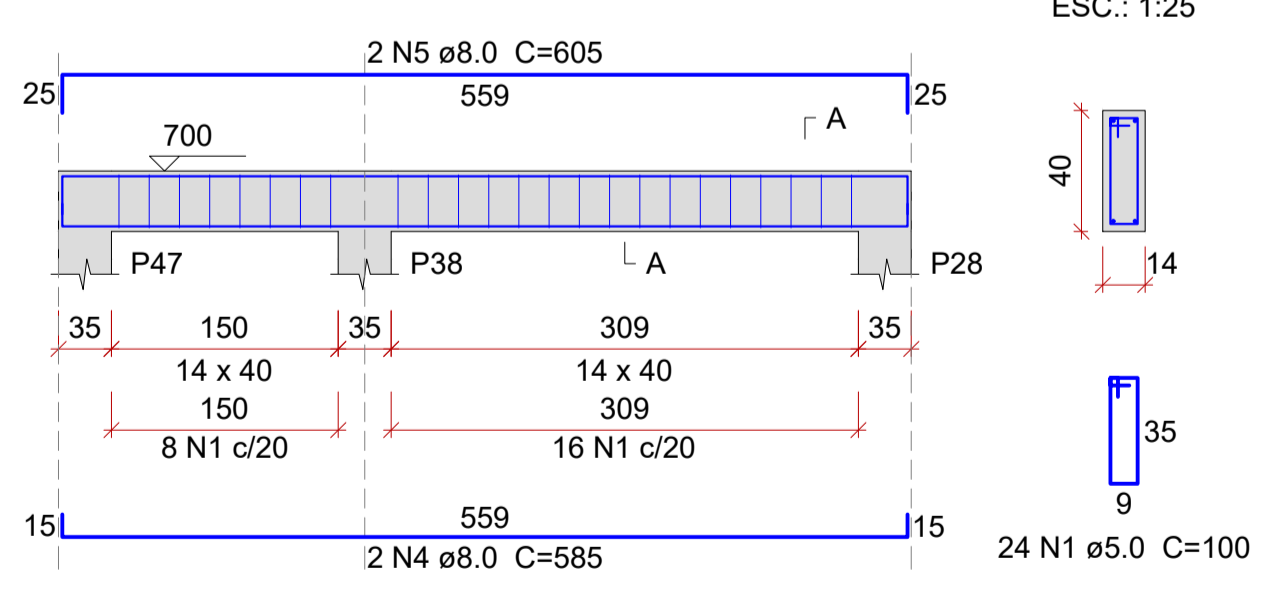
VTO1 (14 x 40)
ESC.: 1:50



VTO2 (14 x 40)
ESC.: 1:50



VTO3 (14 x 40)
ESC.: 1:50



Relação do aço

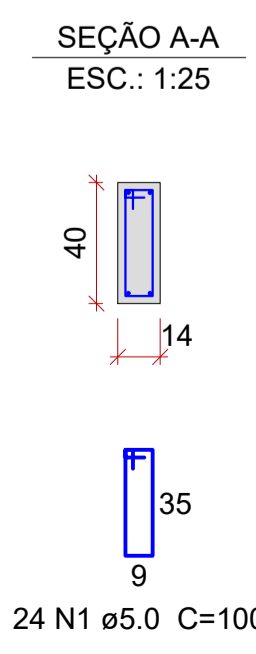
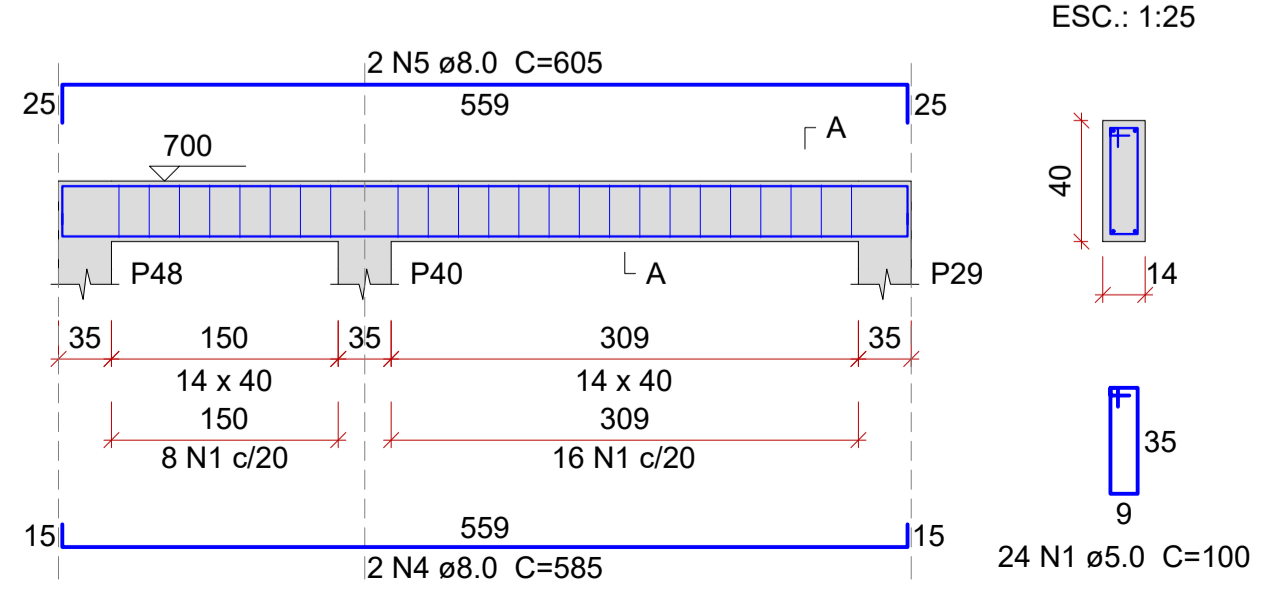
AÇO	N	DIAM (mm)	QUANT	C.UNIT (cm)	C.TOTAL (cm)
VTO1					
VTO2					
VTO3					
VTO4					

Resumo do aço

AÇO	DIAM (mm)	C.TOTAL (m)	QUANT (Barras)	PESO (kg)
CA50	8.0	87.6	8	34.6
CA60	5.0	94	8	14.5
PESO TOTAL (kg)				
CA50		34.6		
CA60		14.5		

Volume de concreto (C-25) = 1.01 m³
Área de forma = 19.42 m²

VTO4 (14 x 40)
ESC.: 1:50



VIGAS DO PAVIMENTO TORRE

ESCALA INDICADA

REVISÃO: R00 DATA: 03/2022 DESCRIÇÃO: EMISSÃO INICIAL

(47) 3531-4242
amavi@amavi.org.br
amavi.org.br
f @amavi_altoavale
Rua XV de Novembro, 737
Centro, Rio do Sul/SC
89160-015

PROPRIETÁRIO / CONTRATANTE: ASSINATURA:

PREFEITURA MUNICIPAL DE WITMARSUM

CNPJ: 83.102.442/0001-76

RESPONSÁVEL TÉCNICO PROJETO: ASSINATURA:

EDUARDO FRANCISCO SILVA DE FIGUEIREDO

ENGENHEIRO CIVIL - CREA: 187051-8-SC

PROJETO: ESTRUTURAL

OBRA:

CONSTRUÇÃO DE UMA UNIDADE BÁSICA DE SAÚDE DE PORTE 1

LOGRADOURO: RUA 25 DE JULHO BAIRRO: CENTRO Nº: S/N

MUNICÍPIO: WITMARSUM UF: SC CEP: 89157-000

ÁREA TOTAL EDIFICAÇÃO: 346,45m²

CONTEÚDO: VIGAS DO PAVIMENTO RESERVATÓRIO VIGAS DO PAVIMENTO TORRE

ESCALA: INDICADA

DATA: SETEMBRO/2022

CÓDIGO AMAVI: 2744

DESENHISTA: EDUARDO FIGUEIREDO

EST24/24

TODOS OS DIREITOS RESERVADOS. PROIBIDA A REPRODUÇÃO PARCIAL OU TOTAL. DESENHO VALUADO SOMENTE ASSINADO PELO RESPONSÁVEL DO PROJETO.